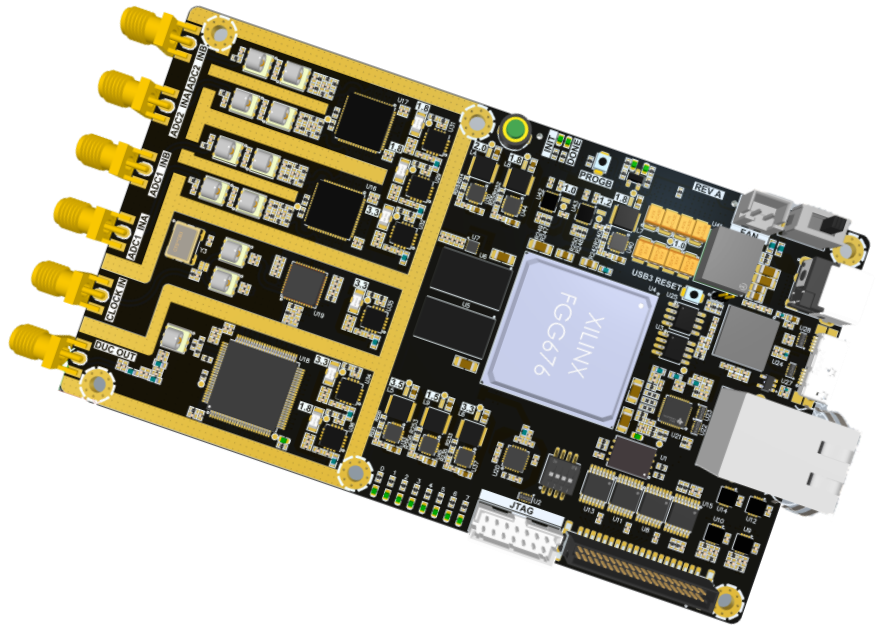


PX7KS04 DSP FPGA Card



- **Xilinx KINTEX-7 FPGA**
 - XC7K160T-2FF676 (standard)
 - XC7K325T-2FF676 (optional)
 - XC7K410T-2FF676 (optional)
- **Four Channel Analog to Digital Converter(ADC) Input**
 ADS42LB69 (Standard) (16bit)
 ADS42LB49 (optional) (14bit)
 - 16bit/14bit 250 MS/s
 - ENOB: 12.1/11.93 LSBs
 - SFDR: 87 dBc
 - SNR: 74.9 dBFS
- **Digital Up Converter(DUC)**
 AD9957BSVZ
 - 1 GSPS internal clock speed (up to 400 MHz analog output)
 - Integrated 1 GSPS 14-bit DAC
 - 250 MSPS input data rate
 - Phase noise ≤ -125 dBc/Hz
 - Dynamic performance >80 dB narrow-band SFDR
 - Interpolation DAC mode
- **Compact Size (140mm x 80mm)**
- **Various interfaces**
 - Gigabit Ethernet (Up to 980Mb/s)
 - USB3.0 Super Speed (Up to 3Gb/s)
 - Dual RS422, RS485 and RS232
- **On Board PLL (AD9517)**
- **8Gb DDR3(256 Mb x 32) 3200Mb/s**
- **256Mb QSDI Flash**
- **Expansion connector**
 - 8X Multi Gigabit Transceivers(MGT) Up to 12Gb/s (B2B Connector)
 - 60 high speed I/O (B2B Connector)
 - 12 Buffed I/O (W2B Connector)
 - Differential PLL clock output

